



Prospectus 2024

HUME  **CONSERVATORIUM**
FOUNDATION

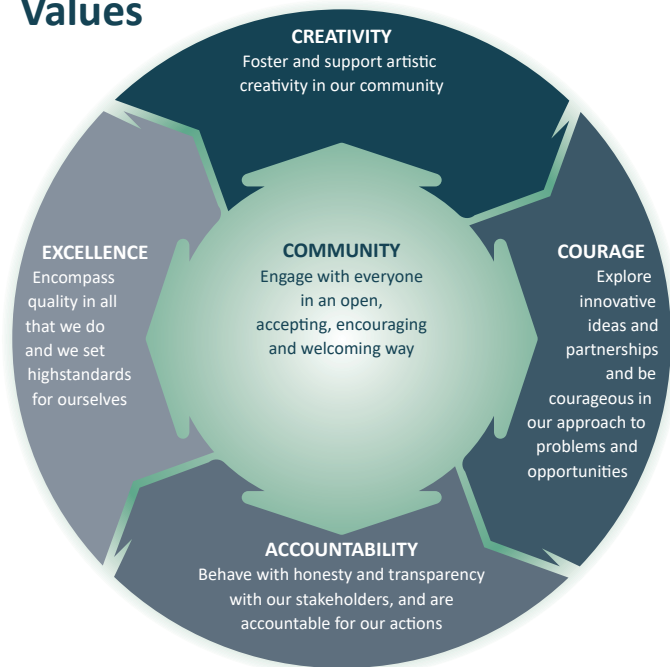


Hume Conservatorium

Hume Conservatorium is a for purpose educational charity providing music education in the Southern Tablelands and Southern Highlands since 1985, and a member of the Association of NSW Regional Conservatoriums.

We offer accessible music programs for all ages and abilities, across all genres of music, including in schools and education centres. Our broad role enriches the life of our communities. We are a regional community of music makers and creatives.

Values



Vision and Purpose

We inspire, connect and enrich our diverse community through the power of music and creativity. Hume Conservatorium is the trusted go-to provider, supporter and enabler of quality music education, performance and creativity for everyone in our region by supplying:

- the opportunity for people of all ages to learn about music and learn study any musical instrument including voice through our music school.
- a broad-reaching in schools music program.
- opportunities for community engagement through a range of local music programs.
- opportunities for the community to hire venues and purchase music and related materials.

A community that is engaged, connected, educated and entertained through the creation, performance, presentation and learning of music, enriching the cultural and musical life of the region and enhancing the life skills of the region's residents.



The Hume Conservatorium Foundation

The Hume Conservatorium Foundation Fund will be a capital fund for the benefit of the Hume Conservatorium of Music. Our purpose in establishing the Fund is to develop a perpetual investment in support of our work. Once established, the Fund can provide an independent income in support of music education in the Southern Tablelands and Highlands of NSW.

2025 marks the 40th anniversary of the Conservatorium, but like many for purpose organisations, it has not yet established a capital endowment in support of its work. With the establishment of the Foundation Fund we intend to remedy this oversight, and protect the donations received from being expended on immediate operational expenditures.

There will be an Advisory Council which the Board of the Conservatorium will consult in relation to uses of Fund income. Donations to the Fund will be invested in a named fund through GreaterGood (The Capital Region Foundation).

Foundation Promise

The needs of the community, and of the Conservatorium, will change over time and our priorities will evolve accordingly. But we promise the following:

The funds raised will be professionally managed as a capital resource for the benefit of the Conservatorium and the music education in the region we serve

There will be an advisory body informing our use of earned income and the management of the Foundation's funds more generally

The Foundation will complement and not replace annual fundraising. (Annual fundraising has focused on bursaries, scholarships, teaching equipment and specific projects. We expect these efforts will continue.)

Income from the Foundation will support providing education where it cannot otherwise be funded – especially for the disadvantaged.

Income from the Foundation will be used to improve the quality of what we deliver – which may involve resources such as equipment, physical/technical facilities or professional development.



Greater Good

GreaterGood is a public charitable foundation established by the Public Trustee and Guardian for the ACT to benefit communities in the ACT and Capital Region. Both GreaterGood and the Hume Conservatorium are income tax exempt charities with Deductible Gift Recipient status from the ATO. By investing donations to the Fund with GreaterGood, the Conservatorium can ensure professional management of all funds received without the legal and administrative burden of establishing and managing its own charitable trust. GreaterGood funds are governed by Deeds endorsed under Subdivision 50.5 of the Income Tax Assessment Act 1997

Further information about GreaterGood fund performance is available at, <https://www.greatergood.org.au/get-involved/fund-performance>

A list of donors and causes using GreaterGood is available at: <https://www.greatergood.org.au/get-involved/donors-and-causes>

Make a real difference

Musical experience and education changes lives. It does so at a deep human level because music directly affects our emotions and well being. It does so because making music engages multiple mental and physical responses simultaneously – enhancing physical and emotional development in a unique way. And it does so because music making is a social activity which promotes connections and shared experiences, collaborative skills and relationship building.

So an investment in musical education will have lifelong benefits for those it touches. And as a capital fund, the Hume Conservatorium Foundation is designed to promote long term outcomes. Initially they may be modest, but they will grow, and you can have pride in being someone who helped to establish something important for our community.

Research clearly demonstrates the considerable benefits of music learning including; improved cognitive development, language and literacy skills, academic achievement, self esteem, wellbeing and contributes to creating social cohesion and reducing isolation.*

*Collins, S., Dwyer, R., Date, A., Music Education – A Sound Investment (2020) Alberts/The Tony Foundation



What to give

Opportunities for Philanthropy

Help us hit our goal of raising 500,000 for the foundation. This would support the conservatorium to have a steady income of 20,000 per annum.

Tiers for Philanthropic donations.

Endowing Donations: You can give a single substantial capital donation and be recognised as a Founding Donor. \$25,000 or more

Sustaining Donations: you can make a commitment to a regular sustaining donation over a number of years and be recognised as a Foundation Builder. Target- \$20,000 in capital over an agreed term.

Single or ad hoc Donations: you can contribute smaller sums from time to time and be recognised as a Foundation Supporter.

Other Ways to Give

If you feel the Foundation is not the best approach for your philanthropic investment, there are other ways you can support our work. These include:

- our annual fundraising – eg for scholarships
- specific investments – eg special purpose endowments, facility upgrades
- sponsorship of particular programs which address a specific need or aspect of music education you consider important
- estate planning and bequests or memorial gifts.



Talk with us

We would welcome an opportunity to discuss any opportunities you would like to explore.

As for investments in the Foundation, we can recognise your support.

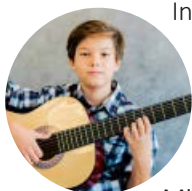
This can be especially important for memorial giving.

George Brenan email: Ceo@humecon.nsw.edu.au



Case Studies

Scholarships have Impact



In 2023 Daniel received the Katz Family Scholarship. Daniel has been studying piano for 5 years and has shown great commitment and potential. In 2022 he played for the dignitaries including the NSW Minister of the Arts at the opening of the Old Ceramics Hall. Daniel has been part of our musicianship and composition classes. Daniel has learnt music from a young age and has just been accepted into a selective High School for Year 7 in 2024.

Bursaries Change Lives.



Riley's* parents recently separated, and they are now living in a single parent home. Riley's older brother is living with a disability and requires regular care. A recent cancer diagnosis has further contributed to the family's financial hardship. The Hume Conservatorium bursary program has enabled Riley to continue music lessons despite her families financial hardships. This has maintained Riley's passion for music as well as creating long-lasting educational and social benefits.

For students like Riley a bursary enables a young person access to music education and all the lifelong benefits that that brings.

Music has Life-long Impacts



Research clearly demonstrates the considerable benefits of music learning including; improved cognitive development, language and literacy skills, academic achievement, self esteem, wellbeing and contributes to creating social cohesion and reducing isolation.*

Your financial contribution towards our scholarship and bursary fund is essential to the delivery of meaningful music education for students living in regional and low socio-economic areas. Scholarships and Bursaries are essential for students who may excel and for students for whom the lifelong benefits of music will help change their lives.

*Collins, S., Dwyer, R., Date, A., Music Education – A Sound Investment (2020) Albers/The Tony Foundation

*names & images have been changed



The Region

LGA stats

Upper Lachlan

211 currently enrolled
1713 children under 18

Goulburn Mulwarree

536 currently enrolled
6904 children under 18

Yass Valley

9 currently enrolled
4152 children under 18

Wingecarribee

213 Students currently enrolled
8422 children under 18

The Board



Robert Hunt
Chair/Treasurer



Ed Suttle
DIRECTOR



Alice McKeller
DIRECTOR



Alex Francois
DIRECTOR



Mark Bradbury
DIRECTOR

Donors

While the Hume Conservatorium Foundation is a new initiative we recognise and thank the following Businesses, Families and Individuals who have historically been generous donors and supporters of the Hume Conservatorium.



The Suttle Family

The Kats Family Foundation

The Blake Sheridan Scholarship for Voice

The Ros Murphy Scholarship for Piano

The Aldridge Concert Band Bursary

The Couch Woodwind Scholarship

The O'Brien-Marsh Family

The Goulburn Lions Club

The Warren Baldsing Memorial Jazz Scholarship

Department of Education

If you would like to discuss options to offer your support please call us during office hours on **02 4816 1311** or to find out more visit **humecon.nsw.edu.au**

